

1928 Antique Dump Truck History



1928 Antique Dump Truck



graniterock.com

Jim West
831.768.2071
jwest@graniterock.com

History

This is the first Model AA and replaced the Model TT.

- Weight empty: 3,500 pounds
- Load capacity 1.5 yards, 2 tons
- 131 inch wheelbase
- 20 inch wheels

Approximately 5,000,000 Model A's and AA's were made.

- Wood-frame steel body cab safety-glass
- Windshield opens for ventilation
- Hand operated windshield wiper (driver's side only)
- Hand operated dump body (crank on helper's side)

Advertised in 1928 as “...ample room for a driver and two helpers.”

- Cost of Ford AA cab & chassis in 1928 = \$610.00
- Cost of dump body & hand operated hydraulic hoist in 1928 = \$175.00



Jim West and the Model AA



Model AA on parade

**1928 Model AA*
Heavy Duty Ford Truck**

- 4 cylinder 200 cubic inch engine
- 4.2:1 compression
- 40 break HP @ 2200 RPM
- 128 foot-pounds of torque @ 1000 RPM
- Engine oiling is pump, splash & gravity system
- Three-speed transmission and dual-drive auxiliary transmission=6 forward and 2 reverse speeds
- 6 volt electric or hand-crank engine starting
- Mechanically actuated brakes
- Front shocks only

Hauling Comparison:

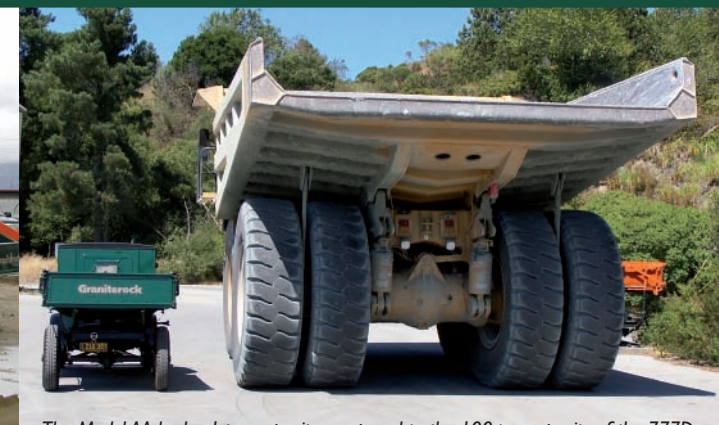
	1928	2006
Capacity	2 tons	100 tons
Empty weight	1.5 tons	80 tons
Top speed	40 mph	40 mph



Model AA and Mars Rover



Ground Breaking Event



The Model AA had a 1-ton capacity, compared to the 100-ton capacity of the 777D



* Ford's Model AA Truck was the heavy duty version of the Model A car and pick-up truck